

# PlexiLine



Professional Food Presentation

Catalog 2024



By **Dupont** Professional Food  
Equipment



NL Dupont is al méér dan 35 jaar een gerenommeerd en gewaardeerd leverancier van een ruim en gevarieerd aanbod van professioneel klein materiaal voor de totale voedingssector. Dupont maakt er een erezaak van om de nieuwste trends en producten als eerste aan hun klanten te kunnen aanbieden.

FR Depuis plus de 35 ans, Dupont SA est un fournisseur apprécié et renommé avec une gamme étendue et diverse de matériel pour l'industrie alimentaire. Dupont se pique d'honneur pour être les premiers à présenter à leurs clients les nouvelles tendances et les tout nouveaux produits.

EN Dupont has been a renowned and valued supplier of a wide and varied range of professional small equipment for the entire food sector for more than 35 years. Dupont makes it a point of honor to be the first to offer the latest trends and products to their customers.





## BENEFITS

- + **Thermoforming PMMA/Acrylic**  
Thermoformage PMMA/Acrylic  
Thermoforming PMMA/Acrylic
- + **Goede koudegeleider**  
Bon conducteur de froid  
Good cold conductor
- + **Hittebestendig -20 tot +80°C**  
Résistant à la chaleur -20 à +80°C  
Heat resistant -20°C up to +80°C
- + **Vaatwasbestendig**  
Lavable au lave-vaisselle  
Dishwasher safe
- + **Modulair**  
Modulair  
Modular
- + **Voedingsgeschikt**  
Alimentaire approuvé  
Food approved
- + **Kleurvast kwaliteitsproduct**  
Produit de qualité qui ne se décolore pas  
High quality and colorfast product



# PlexiLine

NL PlexiLine omvat een uitgebreid gamma aan modulaire en voedingsgeschikte schalen, plateaus, saladepotten en andere accessoires in acrylaat (plexi) die bijdragen tot een perfecte presentatie van de eetwaren in uw toonbank. Wist u dat er op de onderkant van elk schotel een code gegraveerd staat waardoor u makkelijk de juiste schotels kan bij bestellen?

FR PlexiLine vous offre une gamme étendue de plateaux, saladiers et autres accessoires en acrylique (plexi) qui contribuent à une présentation parfaite de vos aliments. Les articles de Plexi Line sont modulaires et adaptés aux aliments. Saviez-vous qu'en dessous de chaque plateau un code est gravé? Ce code unique vous permet de commander facilement des nouveaux plateaux!

EN PlexiLine includes a wide range of modular and food-safe trays, salad pots and other accessories in acrylic (plexiglass) which contribute to a perfect food presentation in your counter. To simplify ordering we provide each tray with a code, engraved on the bottom.





**NL** De standaardkleuren zijn zwart en wit. Houdt u van een moderne look? Dan zullen de schalen in het matte Dark en White Smoke kleur u zeker bekoren. Andere kleuren zoals bordeaux zijn ook mogelijk op aanvraag.

**FR** Les couleurs standards sont blanc et noir. Aimez-vous un look moderne? Ensuite les plats dans la couleur matte Dark et White Smoke vous plairont! Des autres couleurs comme bordeaux sont également possibles sur demande.

**EN** The basic colors are white and black. Do you like a modern look? Then the trays in the matte Dark & White Smoke color will certainly appeal to you. Other colors like burgundy are also available on request.

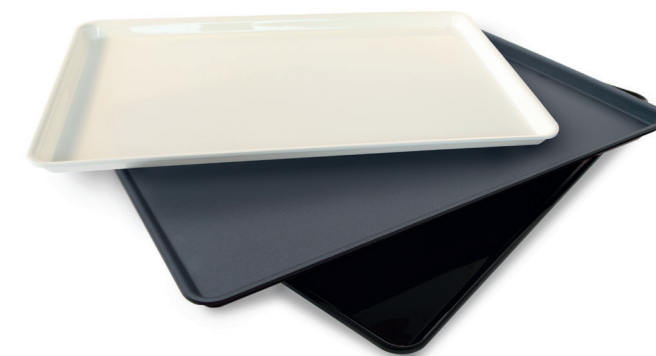
## COLORS

 Wit | Blanc | White

 Zwart | Noir | Black

 White Smoke

 Dark Smoke



ZWART | NOIR | BLACK



DARK SMOKE



WIT | BLANC | WHITE



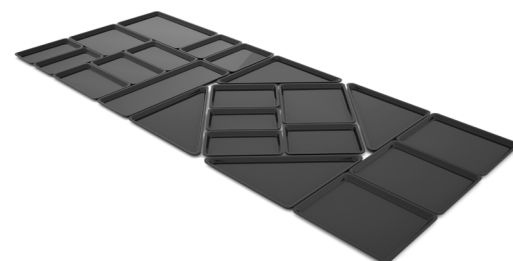
WHITE SMOKE

## CUSTOM COUNTER LAY-OUTS AND SYSTEMS

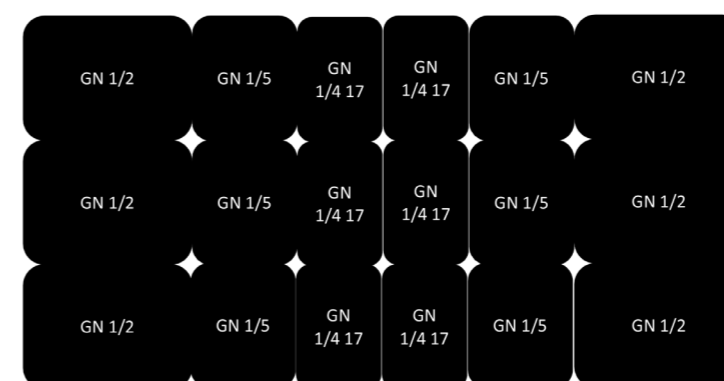
**NL** Heeft u hulp nodig bij de inrichting van uw toonbank? We hebben oplossingen voor elke diepte van een toonbank: 80 cm (Gastronorm), 85 cm (Systeem 28) of 90 cm (Speciale afmetingen). Neem contact op met Dupont PlexiLine, geef de maten van uw toonbank door en wij maken een vrijblijvend ontwerp op voor u! Wilt u ons volledig assortiment aan presentatiemateriaal ontdekken of uw toonbank eens uitpassen? Kom dan eens vrijblijvend langs in onze gloednieuwe showroom op Pluim 5 te Zwevegem, België. Ons team staat altijd klaar om te helpen met raad en daad!

**FR** Avez-vous besoin d'aide pour l'agencement de votre comptoir? Nous avons des solutions pour chaque profondeur de comptoir : 80 cm (Gastronorm), 85 cm (Système 28) ou 90 cm (Dimensions spéciales). Contactez Dupont PlexiLine, donnez-nous les dimensions de votre comptoir et nous vous offrons une conception gratuite. Voulez-vous découvrir notre gamme complète de matériel de présentation ou aménager votre comptoir? Alors rendez-nous visite dans notre tout nouveau showroom à Pluim 5 à Zwevegem, Belgique. Notre équipe est toujours prête à vous aider & vous conseiller!

**EN** Do you need help with the design of your counter? We have solutions for every counter depth: 80 cm (Gastronorm), 85 cm (System 28) or 90 cm (Special dimensions). Please contact Dupont PlexiLine, tell us the dimensions of your counter and we'll make a layout without obligation for you! Would you like to discover our full range of presentation material or try out your counter? Then visit us in our brand new showroom at Pluim 5 in Zwevegem, Belgium. Our team is always ready to help with advice and assistance!



| COUNTER DEPTH | Aluline | 6T4T | Edged | Gastronorm | System 28 | Special dimensions |
|---------------|---------|------|-------|------------|-----------|--------------------|
| ≥ 60 cm       | x       | x    | x     |            |           |                    |
| ≥ 70 cm       | x       | x    | x     |            |           |                    |
| ≥ 80 cm       | x       | x    | x     | x          |           |                    |
| ≥ 85 cm       |         |      |       | x          | x         |                    |
| ≥ 90 cm       | x       | x    | x     | x          | x         | x                  |



**Gastronorm**

Ontwerp voor toonbank met een diepte van 80 cm.

Conception pour un comptoir avec une profondeur de 80 cm.

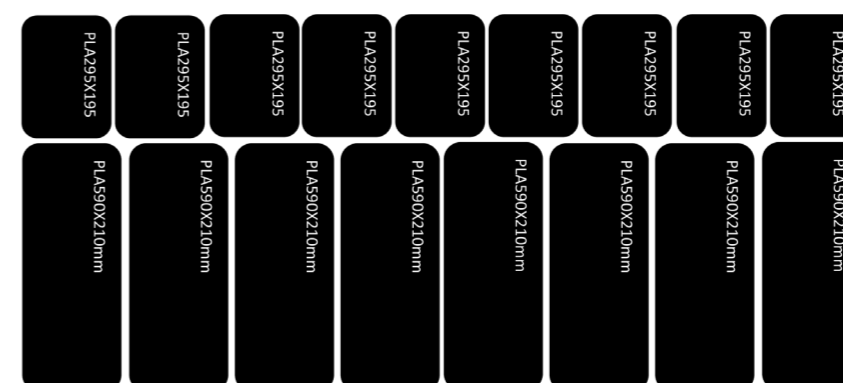
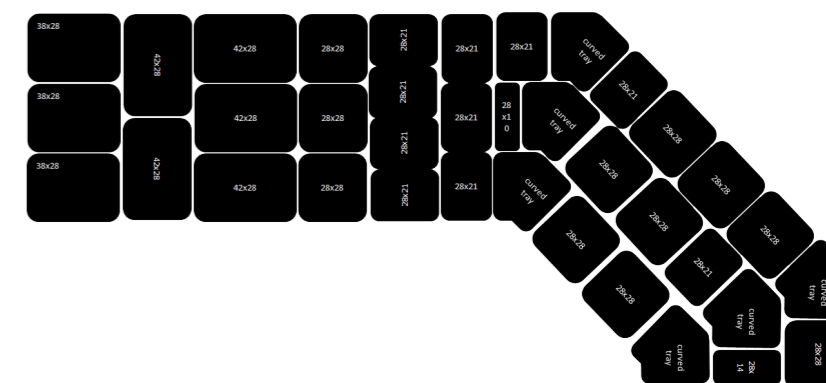
*Design for a counter with a depth of 80 cm.*

**System 28**

Ontwerp voor toonbank met een diepte van 85 cm.

Conception pour un comptoir avec une profondeur de 85 cm.

*Design for a counter with a depth of 85 cm.*



**Special Dimensions**

Ontwerp voor toonbank met een diepte van 90 cm.

Conception pour un comptoir avec une profondeur de 90 cm.

*Design for a counter with a depth of 90 cm.*



# Index

## PLEXILINE

### *Professional Food Presentation*

|    |                         |           |
|----|-------------------------|-----------|
| 1  | System Gastronorm       | <b>12</b> |
| 2  | System 28               | <b>16</b> |
| 3  | System 6T4T             | <b>20</b> |
| 4  | System Edged            | <b>24</b> |
| 5  | System AluLine          | <b>26</b> |
| 6  | Amfitheater             | <b>28</b> |
| 7  | Carousel                | <b>32</b> |
| 8  | Salad Dishes            | <b>34</b> |
| 9  | Salad Holders           | <b>38</b> |
| 10 | Special Dimensions      | <b>39</b> |
| 11 | Risers                  | <b>42</b> |
| 12 | Steps                   | <b>44</b> |
| 13 | Counter Displays        | <b>48</b> |
| 14 | L-Profiles and Dividers | <b>50</b> |
| 15 | Serving Tools           | <b>51</b> |
| 16 | Label Accessories       | <b>52</b> |



# System Gastronorm

**NL** Het systeem Gastronorm omvat een reeks presentatieplateaus voor toonbanken van 80 cm diep. Deze plexi plateaus zijn beschikbaar in diverse formaten, dieptes en kleuren. Voor de meeste plateaus zijn er ook bijpassende deksels en roosters verkrijgbaar.

**FR** Le système Gastronorm est une gamme de plateaux de présentation pour des comptoirs avec une profondeur de 80 cm. Ces plateaux en plexi sont disponibles en différentes tailles, profondeurs et couleurs. Des couvercles et des grilles assortis sont également disponibles pour la plupart des plateaux.

**EN** The System Gastronorm includes a range of presentation trays for counters with a depth of 80 cm. These plexi trays are available in different sizes, depths and colors. Matching covers and grids are also available for most trays.

## 3 COLORS



BLACK



WHITE



DARK SMOKE

## ADDITIONS



LID



PETG LID



GRID



## GN 1/1 - 530 x 325 mm

|                 |  |            |  |            |  |           |
|-----------------|--|------------|--|------------|--|-----------|
| H. 20 mm        |  | Ref. 9218  |  | Ref. 20506 |  | Ref. 9233 |
| H. 50 mm - 5,7L |  | Ref. 9555  |  | Ref. 30368 |  | Ref. 9556 |
| H. 80 mm - 10L  |  | Ref. 16756 |  |            |  |           |

|  |  |                |
|--|--|----------------|
| Deksel/ Couvercle/ Lid - 530x325 mm                    |  | Ref. 2157      |
| PETG Thermoform deksel/ Couvercle/ Lid - 530x325x90 mm |  | NEW Ref. 37121 |
| Rooster/ Égouttoir/ Grid - 530x320 mm                  |  | Ref. 2594      |



## GN 1/2 - 325 x 265 mm

|                 |  |           |  |            |  |           |
|-----------------|--|-----------|--|------------|--|-----------|
| H. 20 mm        |  | Ref. 2753 |  | Ref. 18908 |  | Ref. 2754 |
| H. 50 mm - 2,8L |  | Ref. 3412 |  | Ref. 21389 |  | Ref. 3448 |
| H. 80 mm - 4,5L |  | Ref. 3414 |  | Ref. 21745 |  | Ref. 3413 |

|  |  |                |  |            |
|--|--|----------------|--|------------|
| Deksel/ Couvercle/ Lid - 325x265 mm                    |  | Ref. 7062      |  |            |
| PETG Thermoform deksel/ Couvercle/ Lid - 325x265x90 mm |  | NEW Ref. 37074 |  |            |
| Rooster/ Égouttoir/ Grid - 325x265 mm                  |  | Ref. 3795      |  | Ref. 22020 |



## GN 1/3 - 325 x 176 mm

|                 |  |           |  |            |  |           |
|-----------------|--|-----------|--|------------|--|-----------|
| H. 20 mm        |  | Ref. 4020 |  | Ref. 19454 |  | Ref. 4018 |
| H. 50 mm - 1,8L |  | Ref. 4021 |  | Ref. 21390 |  | Ref. 4019 |
| H. 80 mm - 2,8L |  | Ref. 1757 |  | Ref. 24251 |  | Ref. 1569 |

|                                       |  |            |
|---------------------------------------|--|------------|
| Deksel/ Couvercle/ Lid - 325x176 mm   |  | Ref. 10025 |
| Rooster/ Égouttoir/ Grid - 375x230 mm |  | Ref. 19258 |





## GN 1/4 - 265 x 162 mm

|                                       |  |           |  |            |  |            |
|---------------------------------------|--|-----------|--|------------|--|------------|
| H. 20 mm                              |  | Ref. 2755 |  | Ref. 19455 |  | Ref. 2757  |
| H. 50 mm - 1,3L                       |  | Ref. 3450 |  | Ref. 21391 |  | Ref. 3449  |
| H. 80 mm - 2L                         |  | Ref. 2756 |  | Ref. 21744 |  | Ref. 2758  |
| Deksel/ Couvercle/ Lid - 265x162 mm   |  |           |  |            |  | Ref. 7063  |
| Rooster/ Égouttoir/ Grid - 265x162 mm |  |           |  |            |  | Ref. 19257 |



## GN 1/5 - 265 x 200 mm

|                                       |  |            |  |            |  |           |
|---------------------------------------|--|------------|--|------------|--|-----------|
| H. 20 mm                              |  | Ref. 4956  |  | Ref. 19453 |  | Ref. 4955 |
| H. 40 mm - 1,4L                       |  | Ref. 4957  |  | Ref. 21392 |  | Ref. 4958 |
| H. 50 mm - 1,6L                       |  | Ref. 18897 |  | Ref. 24384 |  |           |
| H. 80 mm - 3L                         |  | Ref. 6229  |  | Ref. 24250 |  | Ref. 6228 |
| Deksel/ Couvercle/ Lid - 265x200 mm   |  |            |  |            |  | Ref. 7064 |
| Rooster/ Égouttoir/ Grid - 265x200 mm |  |            |  |            |  | Ref. 9259 |

## GN 1/6 - 176 x 162 mm

|                                     |  |           |  |            |  |            |
|-------------------------------------|--|-----------|--|------------|--|------------|
| H. 20 mm                            |  |           |  | Ref. 24718 |  |            |
| H. 50 mm - 0,8L                     |  | Ref. 7286 |  |            |  | Ref. 13515 |
| Deksel/ Couvercle/ Lid - 176x162 mm |  |           |  |            |  | Ref. 25783 |

## GN 1/9 - 176x108 mm

|          |  |           |  |  |  |  |
|----------|--|-----------|--|--|--|--|
| H. 50 mm |  | Ref. 7287 |  |  |  |  |
|----------|--|-----------|--|--|--|--|

## GN 2/4 - 530 x 162 mm

|          |  |           |  |            |  |           |
|----------|--|-----------|--|------------|--|-----------|
| H. 20 mm |  | Ref. 9547 |  | Ref. 19223 |  | Ref. 9548 |
|----------|--|-----------|--|------------|--|-----------|



## GN 2/5 - 530 x 200 mm

|                                     |  |           |  |            |  |           |
|-------------------------------------|--|-----------|--|------------|--|-----------|
| H. 20 mm                            |  | Ref. 4512 |  | Ref. 21204 |  | Ref. 2843 |
| H. 40 mm - 3L                       |  | Ref. 6312 |  | Ref. 21746 |  |           |
| Deksel/ Couvercle/ Lid - 530x200 mm |  |           |  |            |  | Ref. 2159 |



## GN 3/4 - 487 x 265 mm

|                                     |  |           |  |            |  |           |
|-------------------------------------|--|-----------|--|------------|--|-----------|
| H. 20 mm                            |  | Ref. 3339 |  | Ref. 19458 |  |           |
| H. 50 mm - 4L                       |  | Ref. 4589 |  | Ref. 22003 |  |           |
| H. 80 mm - 7L                       |  | Ref. 6603 |  |            |  |           |
| Deksel/ Couvercle/ Lid - 487x265 mm |  |           |  |            |  | Ref. 2158 |



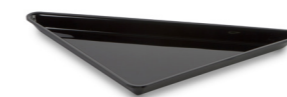
## GN 5/4 - 810 x 265 mm

|                 |  |            |  |            |  |            |
|-----------------|--|------------|--|------------|--|------------|
| H. 17 mm        |  | Ref. 35004 |  | <b>NEW</b> |  |            |
| H. 40 mm - 5,3L |  | Ref. 14879 |  |            |  | Ref. 21747 |



## TRIANGLE - 400 x 400 x 530 mm

|                 |  |            |  |  |  |  |
|-----------------|--|------------|--|--|--|--|
| H. 20 mm        |  | Ref. 4961  |  |  |  |  |
| H. 50 mm - 2,7L |  | Ref. 17600 |  |  |  |  |



## TRIANGLE - 270 x 270 x 360 mm

|          |  |           |  |  |  |  |
|----------|--|-----------|--|--|--|--|
| H. 20 mm |  | Ref. 5001 |  |  |  |  |
|----------|--|-----------|--|--|--|--|





## System 28

NL Het Systeem 28 bevat een reeks zwarte plexi presentatieplateaus die speciaal ontworpen zijn voor toonbanken met een diepte van 85 cm. Het Systeem 28 bevat ook enkele speciale hoekplateaus die de ideale oplossing bieden voor toonbanken met een hoek van 45 of 90°.

FR Le Système 28 est une gamme de plateaux de présentation noirs spécialement conçues pour les comptoirs avec une profondeur de 85 cm. Le Système 28 contient également des plateaux d'angle spéciales qui offrent la solution idéale pour les comptoirs avec un angle de 45 ou 90°.

EN The System 28 includes a range of black plexi presentation trays specially designed for counters with a depth of 85 cm. The System 28 also includes some special corner trays that provide the ideal solution for counters with an angle of 45 or 90°.

### 2 COLORS



BLACK



DARK SMOKE

### ADDITIONS



LID



RISER



GRID





PLA 5614 - 560 x 140 mm


H. 50 mm  Ref. 19887



PLA 4228 - 420 x 280 mm


H. 20 mm  Ref. 8358  Ref. 20945

H. 50 mm - 4L  Ref. 9321  Ref. 22700

H. 60 mm - 4,9L  Ref. 8502  Ref. 30133

Deksel/ Couverture/ Lid - 420x280 mm  Ref. 27549

Rooster/Égouttoir/ Grid - 375x230 mm  Ref. 15307

Verhoger/Réhausseur/ Riser - 370x230x30 mm  Ref. 20163



PLA 4219 - 420 x 190 mm

H. 60 mm  Ref. 28021



PLA 4214 - 420 x 140 mm

H. 60 mm  Ref. 19505



PLA 3828 - 380 x 280 mm

H. 20 mm  Ref. 3034  Ref. 20944

H. 60 mm - 4L  Ref. 15308

Deksel/Couverture/ Lid - 380x280 mm  Ref. 34061

Rooster/Égouttoir/ Grid - 335x250 mm  Ref. 15306



## PLA 2828 - 280 x 280 mm



|                                    |  |           |  |            |
|------------------------------------|--|-----------|--|------------|
| H. 20 mm                           |  | Ref. 9144 |  | Ref. 20940 |
| H. 50 mm - 2,5L                    |  | Ref. 9323 |  | Ref. 22699 |
| Deksel/Couvercle/ Lid - 280x280 mm |  |           |  | Ref. 26810 |

## PLA 28135 Corner - 280 x 280 mm



|                        |  |           |  |            |
|------------------------|--|-----------|--|------------|
| H. 20 mm               |  | Ref. 9330 |  | Ref. 26579 |
| H. 50 mm - 2,8L        |  | Ref. 8936 |  | Ref. 30311 |
| Deksel/Couvercle / Lid |  |           |  | Ref. 26809 |

## PLA 2821 - 280 x 210 mm



|                                      |  |           |  |            |
|--------------------------------------|--|-----------|--|------------|
| H. 20 mm                             |  | Ref. 8657 |  | Ref. 20939 |
| H. 50 mm - 1,8L                      |  | Ref. 3813 |  | Ref. 22698 |
| H. 60 mm - 2,5L                      |  | Ref. 8501 |  | Ref. 22701 |
| H. 100 mm - 3,8L                     |  | Ref. 2832 |  |            |
| Deksel/Couvercle/ Lid - 280x210 mm   |  |           |  | Ref. 18226 |
| Rooster/Égouttoir/ Grid - 375x230 mm |  |           |  | Ref. 15307 |

## PLA 2817 - 280 x 170 mm



|                                   |  |            |  |            |
|-----------------------------------|--|------------|--|------------|
| H.60 mm                           |  | Ref. 11000 |  |            |
| Deksel/Couvercle/Lid - 280x170 mm |  |            |  | Ref. 34389 |

## PLA 2814 - 280 x 140 mm



|                                   |  |            |  |            |
|-----------------------------------|--|------------|--|------------|
| H. 20 mm                          |  | Ref. 9325  |  | Ref. 20942 |
| H.50 mm - 1,1L                    |  | Ref. 28197 |  | Ref. 22697 |
| Deksel/Couvercle/Lid - 280x140 mm |  |            |  | Ref. 18225 |

## PLA 28105 - 280 x 105 mm



|          |  |           |  |            |
|----------|--|-----------|--|------------|
| H. 50 mm |  | Ref. 9075 |  | Ref. 32930 |
|----------|--|-----------|--|------------|

## PLA 4227 - 420 x 270 mm



|          |  |            |  |  |
|----------|--|------------|--|--|
| H. 30 mm |  | Ref. 10063 |  |  |
|----------|--|------------|--|--|



## System 6T4T

NL Het Systeem 6T4T omvat een reeks presentatieplateaus in het moderne matte Dark Smoke of White Smoke kleur. Deze lichte presentatieplateaus met Euronormafmetingen en fijne rand zijn perfect geschikt voor bakkerij en patisserie, viennoiserie, chocolade, kaas en sushi presentatie.

FR Le système 6T4T est une gamme de plateaux de présentation dans la couleur matte et moderne Dark Smoke ou White Smoke. Ces plateaux de présentation légers aux dimensions Euronorm et à bord fin conviennent parfaitement aux présentations de pâtisserie, viennoiserie, chocolat, fromage et sushi.

EN The System 6T4T includes a range of presentation trays in the modern matt Dark Smoke or White Smoke color. These light presentation trays with Euronorm dimensions and fine edge are perfectly suitable for use in bakery and pastry, chocolate, cheese and sushi presentation.

### 2 COLORS



DARK SMOKE



WHITE SMOKE


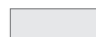


6T4T 6040 - 600 x 400 mm

H. 5 mm  Ref. 15233  Ref. 15234





6T4T 6020 - 600 x 200 mm

H. 5 mm  Ref. 15231  Ref. 15232



6T4T 6015 - 600 x 150 mm

H. 5 mm  Ref. 15654  Ref. 15675



6T4T 6010 - 600 x 105 mm

H. 5 mm  Ref. 8976  Ref. 14563



6T4T 4030 - 400 x 300 mm

H. 5 mm  Ref. 8975  Ref. 15226



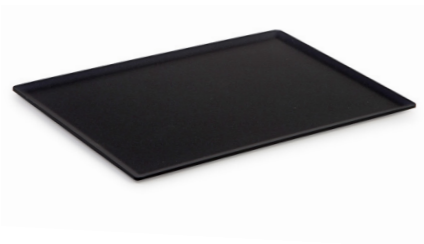
6T4T 4020 - 400 x 200 mm

H. 5 mm  Ref. 21374  Ref. 21375



6T4T 4010 - 400 x 100 mm

H. 5 mm  Ref. 28177



6T4T 3020 - 300 x 200 mm

H. 5 mm  Ref. 15229  Ref. 15230



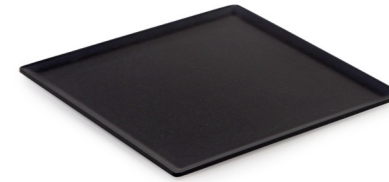
6T4T 3515 - 350 x 150 mm

H. 5 mm  Ref. 24944



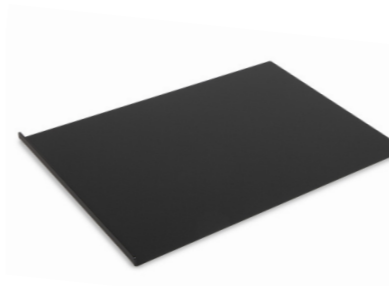
6T4T 3015 - 300 x 150 mm

H. 5 mm  Ref. 18661  Ref. 18662

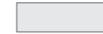


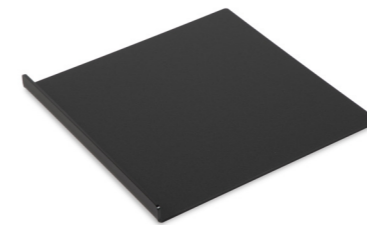
6T4T 2020 - 200 x 200 mm

H. 5 mm  Ref. 15227  Ref. 15228




6T4T 6040 Raised Edge - 600 x 400 mm

H. 5/20 mm  Ref. 21216  Ref. 21234



6T4T 3030 Raised Edge - 300 x 300mm

H. 5/20 mm  Ref. 21073  Ref. 21072



PRALINE 2818 - 285 x 185 mm

H. 2 mm  Ref. 17340



PRALINE 2818 - 185 x 185 mm

H. 2 mm  Ref. 17341

## System Edged

NL De Edged serie omvat enkele presentatieplateaus in het moderne matte Dark Smoke met een opstaande rand van 15 mm. Deze lichte presentatieplateaus zijn perfect geschikt voor bakkerij en patisserie, viennoiserie, chocolade, kaas en sushi presentatie.

FR La série Edged comprend des plateaux de présentation dans la couleur matte et moderne Dark Smoke avec un bord élevé de 15 mm. Ces plateaux de présentation légers conviennent parfaitement aux présentations de pâtisserie, viennoiserie, chocolat, fromage et sushi.

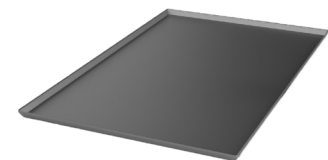
EN The Edged series includes some presentation trays in the modern matt Dark Smoke color with a raised edge of 15 mm. These light presentation trays are perfect for the stylish presentation of patisserie, chocolate, cheese and sushi presentation.



1 COLOR

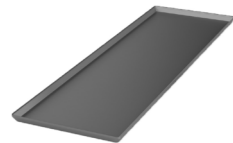


DARK SMOKE



EDGED 6040 - 600x400 mm

H. 15 mm  Ref. 34963



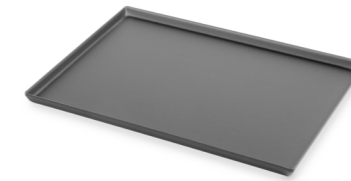
EDGED 6020 - 600x200 mm

H. 15 mm  Ref. 34962



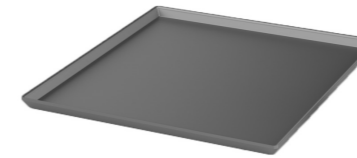
EDGED 6010 - 600x105 mm

H. 15 mm  Ref. 30632



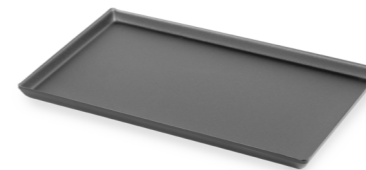
EDGED 4030 - 400 x 300mm

H. 15 mm  Ref. 30631



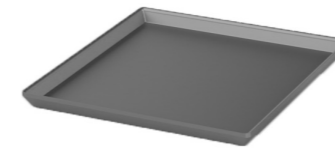
EDGED 3030 - 300x300 mm

H. 15 mm  Ref. 35789



EDGED 3020 - 300 x 200mm

H. 15 mm  Ref. 30630



EDGED 2020 - 200x200 mm

H. 15 mm  Ref. 34961



## System AluLine

**NL** De AluLine bestaat uit een reeks presentatieplateaus uit gelakt aluminium met een opstaande rand van 10 mm. Deze uiterst lichte plateaus zijn bestand tegen temperaturen tussen -20°C en +80°C. Deze plateaus zijn schokbestendig. De AluLine is beschikbaar in 6 afmetingen en in 3 kleurversies, namelijk zwart en wit.

**FR** L'AluLine se compose d'une série de plateaux de présentation en aluminium peint avec un bord relevé de 10 mm. Ces plateaux extrêmement légères sont résistants aux températures entre -20°C et +80°C. Ces plateaux sont résistants aux chocs. L'AluLine est disponible en 6 tailles et en 3 couleurs, à savoir le noir et le blanc.

**EN** AluLine consists of a series of painted aluminum presentation trays with a raised edge of 10 mm. These extremely light trays are resistant to temperatures between -20 °C and +80 °C. AluLine trays are also resistant to bumps and scratches. These AluLine trays are available in 6 sizes and in 3 colors, black and white.

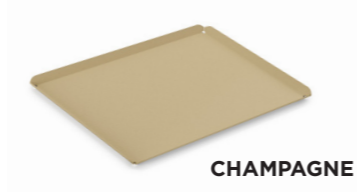
### 3 COLORS



BLACK



WHITE



CHAMPAGNE



ALULINE 6040 - 600 x 400 mm

H. 10 mm  Ref. 30449  Ref. 30448  Ref. 32418


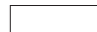



ALULINE 6020 - 600 x 200 mm

H. 10 mm  Ref. 30447  Ref. 30446  Ref. 32417


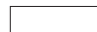



ALULINE 6015 - 600 x 150 mm

H. 10 mm  Ref. 30445  Ref. 30444  Ref. 32416



ALULINE 6010 - 600 x 100 mm

H. 10 mm  Ref. 30443  Ref. 30442  Ref. 32415



ALULINE 4030 - 400 x 300 mm

H. 10 mm  Ref. 30720  Ref. 30719  Ref. 32414



ALULINE 3020 - 300 x 200 mm

H. 10 mm  Ref. 30441  Ref. 30440  Ref. 32413



# Amphitheater

NL Presenteer uw gerechten op een originele en stijlvolle manier met dit Amphitheater presentatiesysteem. Deze sets met een grondoppervlakte van 800x800mm bestaan uit een anti-slip trap van 3 niveaus met 9 of 13 plateaus. De sets zijn verkrijgbaar in verschillende kleuren en dieptes.

FR Présentez vos plats d'une manière originale et élégante avec ce système de présentation Amphitheatre. Les sets avec une surface au sol de 800x800mm sont constitués d'un escalier antidérapant de 3 niveaux avec 9 ou 13 plateaux. Les sets sont disponibles en différentes couleurs et profondeurs.

EN Present your dishes in an original & stylish way with this Amphitheater presentation system. These sets with a ground surface of 800x800mm consist of a non-slip step with 3 levels and 9 or 13 trays. These sets are available in different colors and depths.

## 2 COLORS, 2 HEIGHTS AND 2 SETS



BLACK - HEIGHT 80 - SET 14 PIECES





DARK SMOKE - HEIGHT 50 - SET 10 PIECES



## Amphitheater set (10 pieces)



### AMPHITHEATER SET (10 PIECES) - 800x800 mm

H. 50 mm  Ref. 24856  Ref. 24857



1 x

### STEP 1/4 CIRCLE - 800 x 800 mm

H. 65 mm  Ref. 19840



1 x

### QUARTER MOON 90° - 265 x 265 mm


H. 50 mm  Ref. 18900  Ref. 21999

Deksel/ Couvercle/ Lid  Ref. 26360



2 x

### CORNER 45° - 265 mm


H. 50 mm  Ref. 18899  Ref. 22000

Deksel/ Couvercle/ Lid  Ref. 26362



4 x

### CORNER 22,5° - 265 mm

H. 50 mm - 2,2L  Ref. 18898  Ref. 22001

Deksel/ Couvercle/ Lid  Ref. 26361



1 x

**TRIANGLE LEFT - 300 x 530 mm**

H. 50 mm - 2L  Ref. 19664  Ref. 22489

Deksel/ Couvercle/ Lid  Ref. 26363



1 x

**TRIANGLE RIGHT - 300 x 530 mm**

H. 50 mm - 2L  Ref. 19665  Ref. 22490

Deksel/ Couvercle/ Lid  Ref. 26364

Amphitheater set (14 pieces)



**AMPHITHEATER SET (14 PIECES) - 800x800 mm**

H. 50 mm  Ref. 24858  Ref. 28096

H. 80 mm  Ref. 24859



1 x

**STEP 1/4 CIRCLE - 800 x 800 mm**

H. 65 mm  Ref. 19840



1 x

**QUARTER MOON 90° - 265 x 265 mm**

H. 50 mm - 1,5L  Ref. 18900  Ref. 21999

H. 80 mm - 2,3L  Ref. 20037

Deksel/ Couvercle/ Lid  Ref. 26360



4 x

**CORNER 22,5° - 265 mm**

H. 50 mm - 1,1L  Ref. 19843  Ref. 27984



H. 80 mm - 1,8L  Ref. 20034

Deksel/ Couvercle/ Lid  Ref. 26503



6 x

**CORNER 15° - 265 mm**

H. 50 mm - 1,3L  Ref. 19842  Ref. 27983

H. 80 mm - 2,3L  Ref. 20033

Deksel/ Couvercle/ Lid  Ref. 26504



1 x

**TRIANGLE LEFT - 300 x 530 mm**

H. 50 mm - 2L  Ref. 19664  Ref. 22489

H. 80 mm - 2,6L  Ref. 20031

Deksel/ Couvercle/ Lid  Ref. 26363



1 x

**TRIANGLE RIGHT - 300 x 530 mm**

H. 50 mm - 2L  Ref. 19665  Ref. 22490

H. 80 mm - 2,6L  Ref. 20032

Deksel/ Couvercle/ Lid  Ref. 26364





## Carousel

NL Met het Systeem Carousel kan u uw gerechten niet alleen mooi presenteren maar ook gemakkelijk in en uit uw toonbank halen. Deze set bestaan uit een draaibare plaat waarop 9 plateaus van 80 mm diep staan. Rondom de plaat van Ø800mm staan er nog 4 driehoekige plateaus van 60 mm diep.

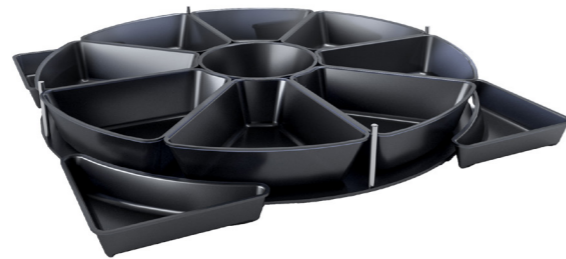
FR Avec le Système Carousel, vous pouvez non seulement présenter magnifiquement vos plats, mais aussi les prendre et placer facilement dans votre comptoir. Ce set se compose d'un disque tournant avec 9 plateaux de 80 mm. Autour du disque de Ø800mm il y a encore 4 plateaux triangulaires de 60 mm.

EN With the System Carousel you can not only beautifully present your dishes, but also easily get them in and out of your counter. This presentation set consists of a rotating plate with 9 plateaus of 80 mm deep. Around the plate of Ø800mm there are also 4 triangular trays with a depth of 60 mm.

### 2 COLORS AND 2 HEIGHTS




BLACK - HEIGHT 50



DARK SMOKE - HEIGHT 80



### CAROUSEL SET (14 PIECES) - 800 x 800 mm

H. 50 mm  Ref. 33913  Ref. 33982

H. 80 mm  Ref. 23143  Ref. 33022



1 x

### ROUND ROTATABLE DISPLAY

Ø. 800 mm  Ref. 24544



8 x

### GN 1/5 - 265 x 265 mm

H. 50 mm - 1,5L  Ref. 33356  Ref. 33979

H. 80 mm - 2,5L  Ref. 22860  Ref. 32677

Deksel/ Couvercle/ Lid  Ref. 27294



1 x

### ROUND SALAD DISH - Ø225 mm

H. 50 mm - 1,5L  Ref. 33357  Ref. 33980

H. 80 mm - 2,5L  Ref. 22866  Ref. 32676

Deksel/ Couvercle/ Lid  Ref. 6680



4 x

### TRIANGLE - 325 x 158 mm

H. 60 mm - 0,9L  Ref. 22861  Ref. 32678

## Salad Dishes

NL Dupont Plexiline biedt een ruim assortiment aan plexi saladepotten en houders aan om uw bereidingen mooi en stijlvol te presenteren in uw toonbank. De saladepotten zijn standaard in zwart. Wit en bordeaux zijn verkrijgbaar op bestelling.

FR Dupont Plexiline offre une large gamme de saladiers et supports à saladiers en plexi pour présenter vos préparations avec élégance dans votre comptoir. Les saladiers sont standard en noir. Blanc et bordeaux sont disponibles sur commande.

EN Dupont PlexiLine offers a wide range of plexi salad dishes and salad dish holders to present your preparations beautifully and stylishly in your counter. The salad dishes are available in various shapes, sizes and colors.

### 3 COLORS



BLACK



WHITE



DARK SMOKE



### SAL 1818 - 180 x 180 mm

H. 80 mm - 1,5L  Ref. 3036  Ref. 15130  Ref. 25251

Deksel/Couvercle/ Lid  Ref. 1083



### SAL 2020 - 205 x 205 mm

H. 80 mm - 2,5L  Ref. 17143  Ref. 17083

Deksel/Couvercle/ Lid  Ref. 18224



### SAL 2115 - 214 x 153 mm

H. 85 mm - 1L  Ref. 5775  Ref. 5774  Ref. 34914

Deksel/Couvercle/ Lid  Ref. 5831



### SAL 2614 - 265 x 144 mm

H. 85 mm - 1,5L  Ref. 708  Ref. 706  Ref. 34915

Deksel/Couvercle/ Lid  Ref. 707



### SAL 2317 - 237 x 170 mm

H. 100 mm - 2L  Ref. 4189  Ref. 1242  Ref. 34916

Deksel/Couvercle/ Lid  Ref. 1243





SAL OCTO 2620 - 265 x 200 mm

H. 50 mm - 2,7L  Ref. 6960  Ref. 6959




SAL OCTO 2632 - 265x325 mm

H. 45 mm - 2L  Ref. 5355  Ref. 5352



SAL OVAL 2632 - 265 x 325 mm

H. 65 mm - 2,7L  Ref. 6661  Ref. 6660

Deksel/Couvercle/ Lid  Ref. 3315



SAL OVAL 2620 - 265 x 200 mm

H. 65 mm - 3,1L  Ref. 6665  Ref. 6666

Deksel/Couvercle/ Lid  Ref. 3316



SAL ROUND - Ø300 mm

H. 65 mm - 3,1L  Ref. 6670  Ref. 6671



SAL ROUND/HEXA - Ø175 mm

H. 80 mm - 1,5L  Ref. 4013  Ref. 4014

Deksel/Couvercle/ Lid  Ref. 4015



SAL ROUND/HEXA - Ø215 mm

H. 60 mm - 2,1L  Ref. 6675  Ref. 6676

Deksel/Couvercle/ Lid  Ref. 6680



SAL SHELL - 270 x 250 mm

H. 70 mm  Ref. 5356



SAL EGG - 300 x 210 mm

H. 75 mm  Ref. 5921



SAL YIN YANG - Ø300 mm

H. 65 mm  Ref. 5869



## Salad Holders

NL Deze saladepothouders zijn vervaardigd uit HIPS (High Impact Polystyrene), een uiterst sterk materiaal dat tevens heel licht is.

FR Ces supports à saladiers sont fabriqués en HIPS (High Impact Polystyrene), un matériau extrêmement résistant et très léger.

EN These salad dish holders are made of HIPS (High Impact Polystyrene), an extremely strong material that is also very light.



HOLDER ROUND/HEXA - 800x400 mm

H. 80 mm  Ref. 25140



HOLDER 4 x GN 1/5 - 810x275 mm

H. 95 mm  Ref. 21975



## Special Dimensions



NL Heeft u nood aan een presentatie plateau met een speciale afmeting? Dan vindt u misschien de perfecte plateau bij onze Special Dimensions, een gamma aan presentatieplateaus met speciale afmetingen.

FR Avez-vous besoin d'un plateau de présentation avec un format spécial? Peut-être vous pouvez trouver le plateau parfait avec nos Special Dimensions, une gamme de plateaux de présentation aux dimensions spéciales.

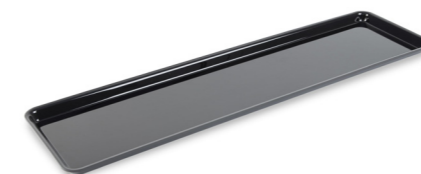
EN Do you need a presentation tray with a special size? Then you may find the perfect tray with our Special Dimensions, a range of presentation trays with special dimensions.





SPECIAL 7620 - 760 x 200 mm


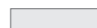
H. 17 mm  Ref. 25030  Ref. 25084

H. 50 mm  Ref. 25031  Ref. 25086

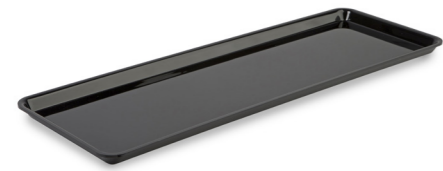


SPECIAL 6040 - 600 x 400 mm

H. 17 mm  Ref. 7299  Ref. 9432

H. 17 mm  Ref. 21163  Ref. 21164





**SPECIAL 6221 - 620x210 mm**

H. 17 mm  Ref. 7309



**SPECIAL 5921 - 590x210 mm**

H. 17 mm  Ref. 9001



**SPECIAL 4023 - 400x235 mm**

H. 50 mm  Ref. 8165



**SPECIAL 3223 - 320 x 235mm**

H. 50 mm  Ref. 8162  Ref. 23773

Deksel/Couvercle/ Lid  Ref. 6379



**SPECIAL 3118 - 310x185 mm**

H. 40 mm  Ref. 8164



**SPECIAL 2919 - 295x195 mm**

H. 20 mm  Ref. 16839



**SPECIAL 2621 - 265x218 mm**

H. 60 mm  Ref. 7216



**SPECIAL 2619 - 260x190 mm**

H. 40 mm  Ref. 9000  Ref. 23772





**SPECIAL 2419 - 240x190 mm**

H. 40 mm  Ref. 17604



**SPECIAL 1919 - 190x190 mm**

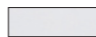


H. 40 mm  Ref. 12841  Ref. 23771



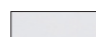

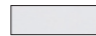
# Risers



## RISER SQUARE 1212 - 120x 120mm



|           |   |           |
|-----------|---|-----------|
| H. 50 mm  |  | Ref. 5350 |
| H. 100 mm |  | Ref. 5351 |
| H. 150 mm |  | Ref. 4883 |

## RISER ROUND 17 - Ø170 mm

|           |   |           |
|-----------|---|-----------|
| H. 50 mm  |  | Ref. 9056 |
| H. 100 mm |  | Ref. 9057 |
| H. 150 mm |  | Ref. 9058 |




## ROUND TRAY - Ø200 mm

|         |   |           |   |            |
|---------|---|-----------|---|------------|
| H. 5 mm |  | Ref. 9246 |  | Ref. 18763 |
|---------|---|-----------|---|------------|



## ROUND TRAY - Ø250 mm

|         |   |           |   |            |
|---------|---|-----------|---|------------|
| H. 5 mm |  | Ref. 9244 |  | Ref. 18764 |
|---------|---|-----------|---|------------|



## ROUND TRAY - Ø300 mm

|         |   |           |   |            |
|---------|---|-----------|---|------------|
| H. 5 mm |  | Ref. 9242 |  | Ref. 22048 |
|---------|---|-----------|---|------------|

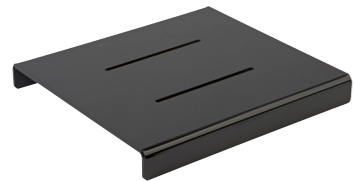


# Steps



**STEP 1 LEVEL 6288 - 624x280 mm**

|          |  |            |  |            |
|----------|--|------------|--|------------|
| H. 35 mm |  | Ref. 17069 |  | Ref. 32273 |
| H. 75 mm |  | Ref. 17068 |  | Ref. 32274 |



**STEP 1 LEVEL 3128 - 312x280 mm**

|          |  |            |
|----------|--|------------|
| H. 35 mm |  | Ref. 17070 |
| H. 75 mm |  | Ref. 17071 |



**STEP 1 LEVEL 2622 - 260x220 mm**

|          |  |            |
|----------|--|------------|
| H. 30 mm |  | Ref. 11912 |
| H. 65 mm |  | Ref. 12171 |



**STEP 1 LEVEL 2519 - 250x190 mm**

|          |  |            |
|----------|--|------------|
| H. 30 mm |  | Ref. 21181 |
|----------|--|------------|



**STEP 1 LEVEL 1515 - 150x150 mm**

|           |  |            |
|-----------|--|------------|
| H. 100 mm |  | Ref. 21290 |
| H. 150 mm |  | Ref. 21288 |





**STEP 1 LEVEL 2020 - 200x200 mm**

|           |  |            |
|-----------|--|------------|
| H. 200 mm |  | Ref. 21289 |
|-----------|--|------------|






STEP 3 LEVEL 5080 - W.500 x L.800mm

H. 80 mm  Ref. 9232  Ref. 24787



STEP 3 LEVEL 2580 - W.250 x L.800mm

H. 80 mm  Ref. 10569  Ref. 24788



STEP 3 LEVEL 6040 - W.400 x L.600mm

H. 120 mm  Ref. 23664



STEP 3 LEVEL 8080 SQUARE - W.800 x L.800mm

H. 65 mm  Ref. 31068







STEP 3 LEVEL ABS/PMMA - W.250 x L.800mm

H. 80mm **NEW**  Ref. 34713

Shockresistant



STEP 3 LEVEL ABS/PMMA - W.500 x L.800mm

H. 80mm **NEW**  Ref. 34714

Shockresistant



HPL STEP 3 WOOD - W.500 x L.800mm

H. 62mm **NEW**  Ref. 37125



HPL STEP 3 STONE - W.500 x L.800mm

H. 62mm **NEW**  Ref. 37124

Counter Displays



DISPLAY 5MM CLOSED - 250 x 285 mm

|            |   |           |
|------------|---|-----------|
| L. 600 mm  |  | Ref. 819  |
| L. 1000 mm |  | Ref. 4833 |



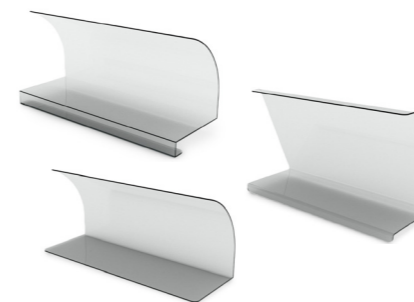
DISPLAY 5MM OPEN - 250 x 285 mm

|            |   |          |
|------------|---|----------|
| L. 600 mm  |  | Ref. 818 |
| L. 1000 mm |  | Ref. 800 |

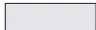


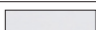



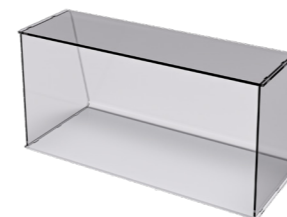
DISPLAY 5MM GASTRONORM - 380 x 310 mm

|           |   |           |
|-----------|---|-----------|
| L. 495 mm |  | Ref. 4146 |
|-----------|---|-----------|



DISPLAY 3MM XT - 210 x 330 mm

|                |   |            |
|----------------|---|------------|
| L. 600 mm - A  |  | Ref. 9534  |
| L. 600 mm - D  |  | Ref. 9148  |
| L. 600 mm - X  |  | Ref. 3582  |
| L. 1000 mm - X |  | Ref. 3581  |
| L. 1000 mm - Y |  | Ref. 11180 |



DISPLAY CLOSED - 250 x 290 mm

|            |   |            |
|------------|---|------------|
| L. 660 mm  |  | Ref. 33354 |
| L. 1000 mm |  | Ref. 33355 |

Met uitneembare zijden / À assembler/ To assemble

## L-Profiles and Dividers



L-PROFILE 8080 - 800 x 800 mm

L. 110 mm  Ref. 22731



L-PROFILE 6012 - 60 x 120 mm

L. 280 mm  Ref. 19541



L-PROFILE 8012 - 80 x 120 mm

L. 110 mm  Ref. 16749

L. 250 mm  Ref. 16747

L. 500 mm  Ref. 12842

L. 835 mm  Ref. 13696



L-PROFILE 6565 - 65 x 65 mm

L. 280 mm  Ref. 21182

L. 390 mm  Ref. 21183

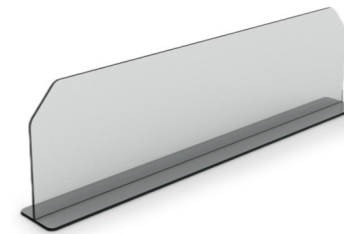
L. 500 mm  Ref. 12843

L. 580 mm  Ref. 16749



L-PROFILE 6065 - 600x650 mm

L. 280 mm  Ref. 17090



T-DIVIDER

L. 600 mm  Ref. 9005

L. 800 mm  Ref. 6886

## Serving tools



SERVING SPOON

Ref. 6900 L. 240 mm 

Ref. 6901 L. 240 mm 



SERVING SPOON PERFORATED

Ref. 14330 L. 250 mm 



**SCOOPER MINCED MEAT**

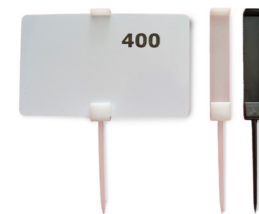
|            |           |                                     |
|------------|-----------|-------------------------------------|
| Ref. 737   | L. 260 mm | <input type="checkbox"/>            |
| Ref. 1946  | L. 260 mm | <input checked="" type="checkbox"/> |
| Ref. 35356 | L. 260 mm | <input checked="" type="checkbox"/> |



**SANDWICH DISPLAY - 510x135 mm**

|          |                                     |           |                                     |            |
|----------|-------------------------------------|-----------|-------------------------------------|------------|
| H. 50 mm | <input checked="" type="checkbox"/> | Ref. 9327 | <input checked="" type="checkbox"/> | Ref. 18765 |
|----------|-------------------------------------|-----------|-------------------------------------|------------|

**Label accessories**



**PLASTIC SPIKE**

|            |                        |                                     |
|------------|------------------------|-------------------------------------|
| Ref. 18823 | L. 110 mm - 50 st./pc. | <input type="checkbox"/>            |
| Ref. 18824 | L. 110 mm - 50 st./pc. | <input checked="" type="checkbox"/> |



**PLASTIC SALAD CLIP**

|            |                  |                                     |
|------------|------------------|-------------------------------------|
| Ref. 25379 | H. 80 x B. 20 mm | <input type="checkbox"/>            |
| Ref. 25380 | H. 80 x B. 20 mm | <input checked="" type="checkbox"/> |





**Dupont**

De Pluim 5, 8550 Zwevegem

056 20 32 09

[info@plexiline.be](mailto:info@plexiline.be)

[www.plexiline.be](http://www.plexiline.be)

